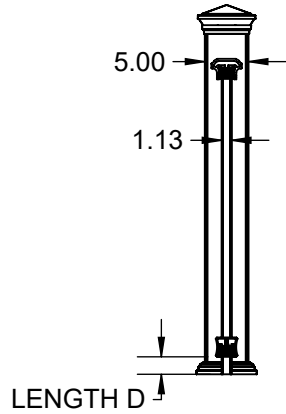
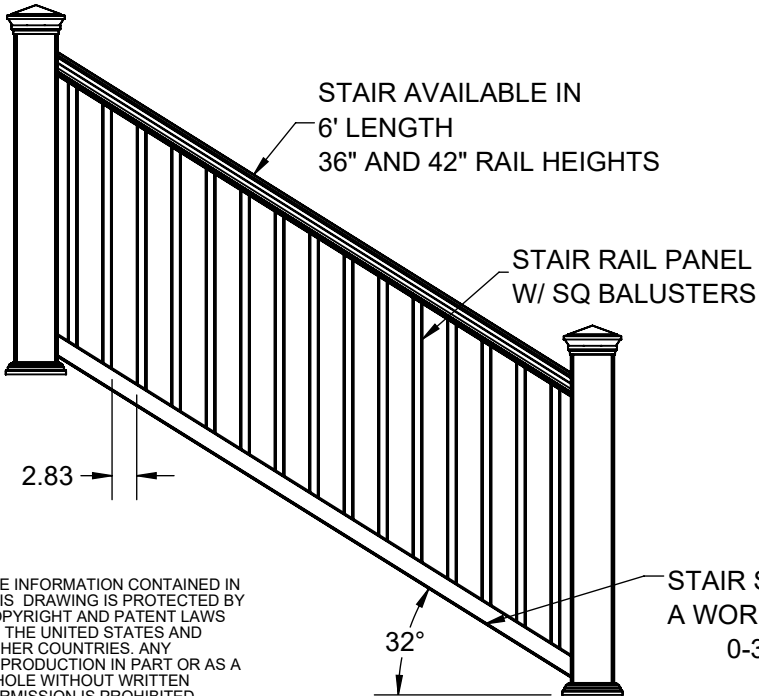
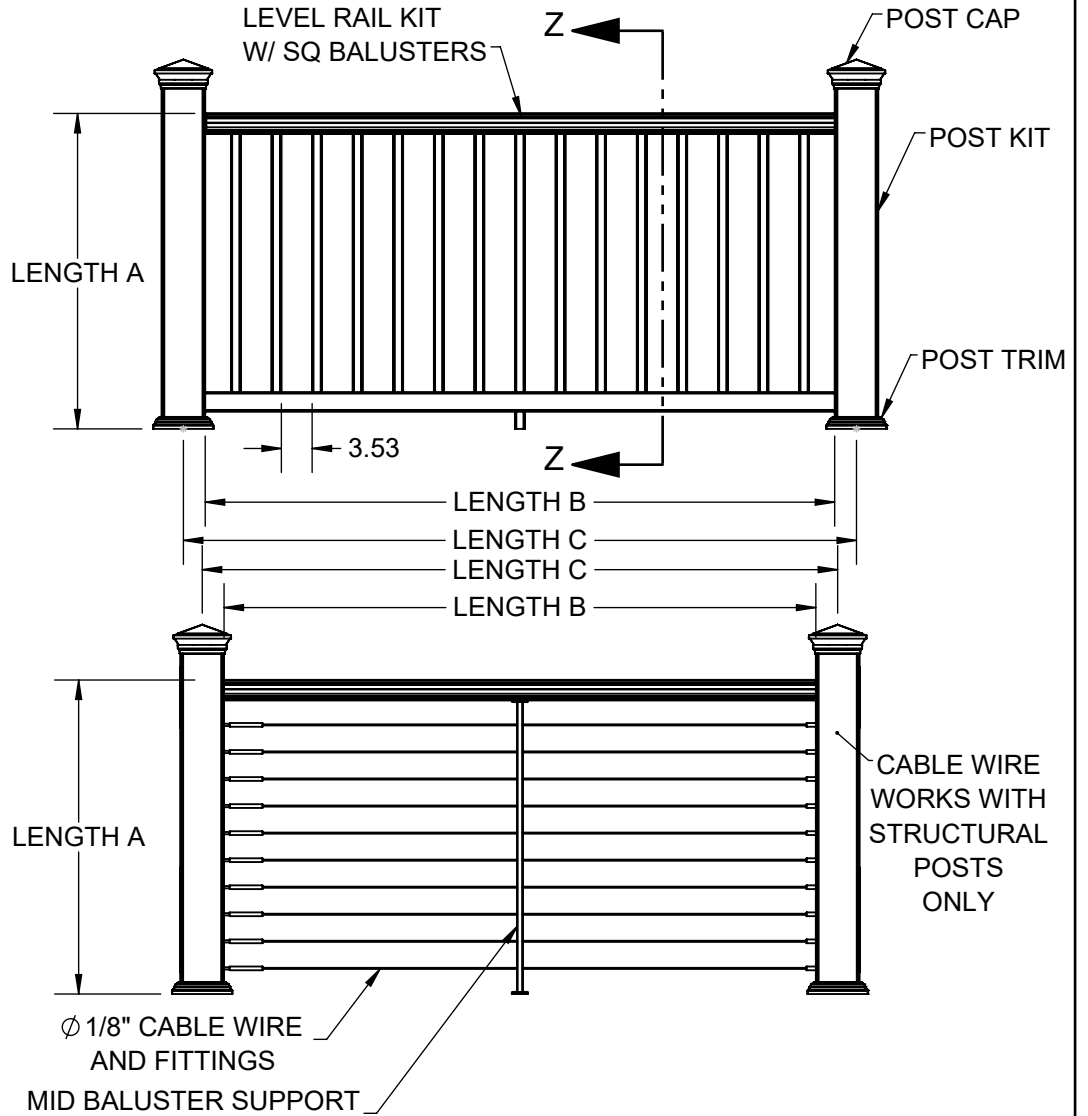


NAVIGATOR LEVEL AND STAIR RAIL DETAILS



SECTION Z-Z
SCALE 1 : 22

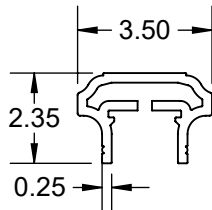
NOTE:
 (A) FINISHED RAIL HEIGHT = 36", 42"
 (B) PANEL LENGTH = 72.125" , 96.125"
 (C) MAX SPANS = 96X36" IRC, 96X42" IBC
 (D) BOTTOM SPACE = 2"- 4"



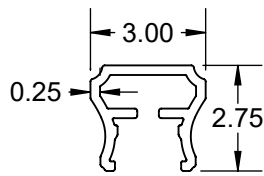
THE INFORMATION CONTAINED IN THIS DRAWING IS PROTECTED BY COPYRIGHT AND PATENT LAWS OF THE UNITED STATES AND OTHER COUNTRIES. ANY REPRODUCTION IN PART OR AS A WHOLE WITHOUT WRITTEN PERMISSION IS PROHIBITED.

DRAWN: CH	DATE: 01/09/2024	APPROVED:
DESCRIPTION: NAVIGATOR LEVEL AND STAIR RAIL		
SHEET 1 OF 4	REVISION	PART NUMBER
SCALE 1:22	0	N/A
WEIGHT: N/A		

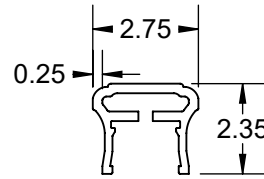
TOP AND BOTTOM RAIL



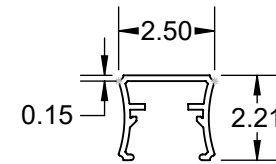
TOP RAIL
CAPITAL



TOP RAIL
CONTEMPO

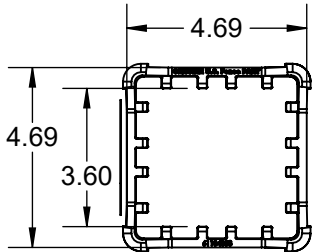


TOP RAIL
GRASPABLE
(STAIR ONLY)

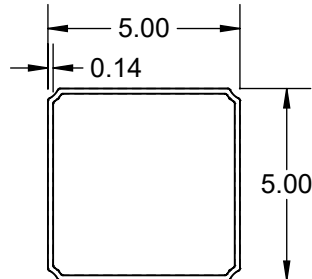


BOTTOM RAIL

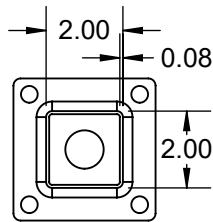
POST COMPONENTS



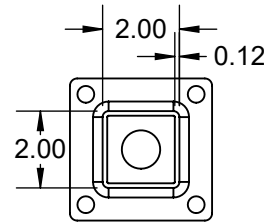
POST SLEEVE INSERT
(INCLUDED W/ SLEEVE)



POST SLEEVE



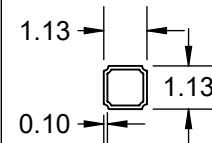
STRUCTURAL POST
(RESIDENTIAL)



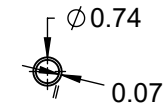
STRUCTURAL POST
(COMMERCIAL)

NOTE: POST SLEEVE INSERT ALIGNS WITH GROOVE ON STRUCTURAL POST INSERT TO WORK WITH 5X5 SLEEVE.

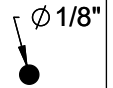
BALUSTERS



SQ BALUSTER



ROUND
BALUSTER



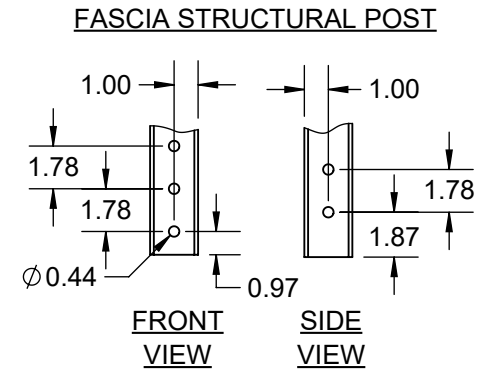
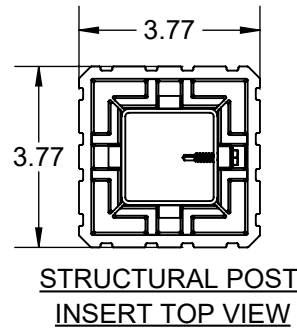
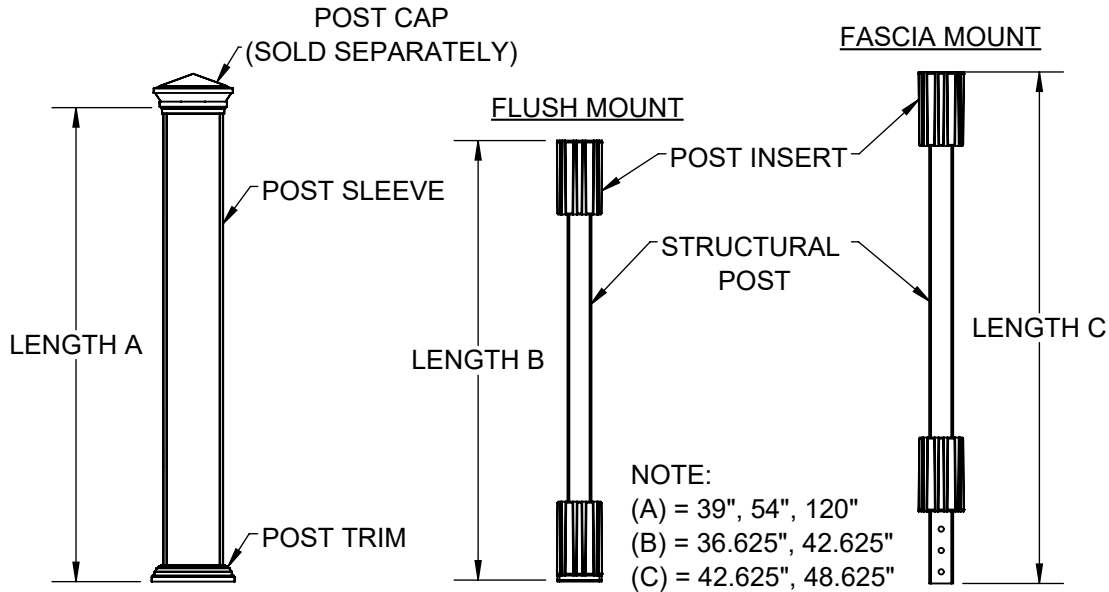
CABLE
WIRE

THE INFORMATION CONTAINED IN THIS DRAWING IS PROTECTED BY COPYRIGHT AND PATENT LAWS OF THE UNITED STATES AND OTHER COUNTRIES. ANY REPRODUCTION IN PART OR AS A WHOLE WITHOUT WRITTEN PERMISSION IS PROHIBITED.

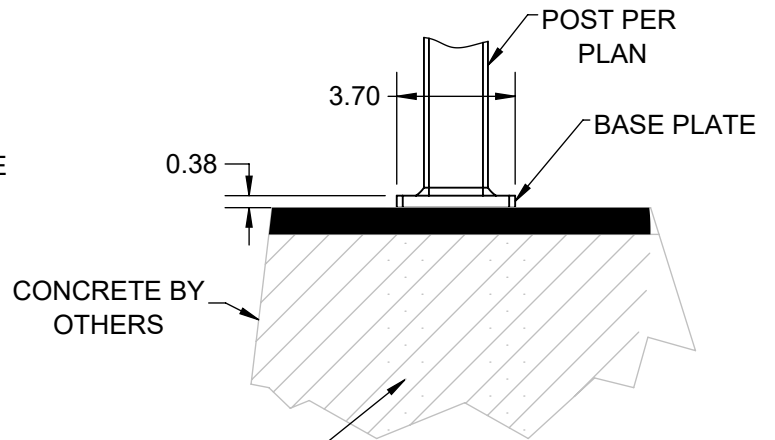


DRAWN: CH	DATE: 01/09/2024	APPROVED:
DESCRIPTION: NAVIGATOR RAIL PROFILES & INFILL DETAILS		
SHEET 2 OF 4	REVISION	PART NUMBER
SCALE 1:5	0	N/A
WEIGHT: N/A		

NAVIGATOR POST AND SURFACE MOUNT DETAILS

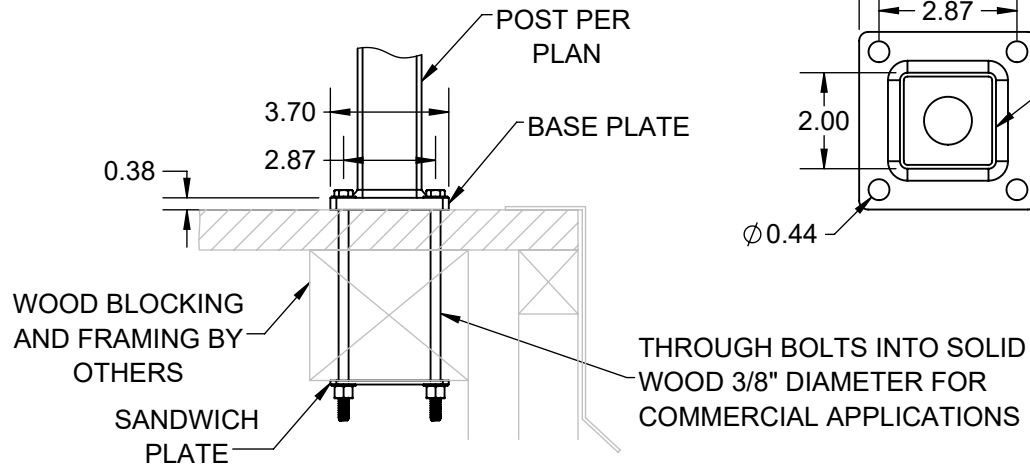


POST BASE CONNECTION INTO CONCRETE WITH WEDGE ANCHORS



ANCHOR INTO CONCRETE. SEE MANUFACTURER INSTRUCTIONS FOR DETAILS.

POST BASE CONNECTION INTO WOOD WITH THRU BOLT



NOTE:

1. COMMERCIAL APPLICATIONS ARE ALWAYS BOLTED, USE 3/8" DIAMETER A307 THROUGH BOLTS INTO SOLID WOOD BLOCKING.
2. WOOD BLOCKING BY OTHERS.
3. BLOCKING MUST BE DESIGNED TO WITHSTAND PROPER LOADING.

THE INFORMATION CONTAINED IN THIS DRAWING IS PROTECTED BY COPYRIGHT AND PATENT LAWS OF THE UNITED STATES AND OTHER COUNTRIES. ANY REPRODUCTION IN PART OR AS A WHOLE WITHOUT WRITTEN PERMISSION IS PROHIBITED.



DRAWN: CH	DATE: 01/09/2024	APPROVED:
DESCRIPTION: NAVIGATOR POST AND SURFACE MOUNT DETAILS		
SHEET 3 OF 4	REVISION	PART NUMBER
SCALE 1:16	△	N/A
WEIGHT: N/A		

MOUNTING SCHEDULE

FOR RESIDENTIAL APPLICATIONS 36" HIGH					
PANEL WIDTH	LOAD	RECOMMENDED BOLT APPLICATION	FOR LAG BOLT APPLICATION 3/8" DIA. SCREW. MINIMUM EMBEDDED SCREW THREAD LENGTH REQUIRED	FOR THROUGH BOLT APPLICATION	FOR CONCRETE ANCHOR APPLICATION 3/8" TITAN HD ANCHOR MINIMUM REQUIRED LENGTH (MINIMUM DISTANCE OF 4" FROM EDGE REQUIRED)
8FT	200LBS	LAG BOLT -OR- THROUGH BOLT -OR- CONCRETE ANCHOR	3.5IN	3/8" HEX BOLT 3/8" FLAT WASHER 3/8" LOCK WASHER 3/8" NUT	4IN
6FT			3IN		3IN
4FT			2.5IN		3IN

FOR COMMERCIAL APPLICATIONS 42" HIGH					
PANEL WIDTH	LOAD	RECOMMENDED BOLT APPLICATION	FOR LAG BOLT APPLICATION 3/8" DIA. SCREW. MINIMUM EMBEDDED SCREW THREAD LENGTH REQUIRED	FOR THROUGH BOLT APPLICATION	FOR CONCRETE ANCHOR APPLICATION 3/8" TITAN HD ANCHOR MINIMUM REQUIRED LENGTH (MINIMUM DISTANCE OF 4" FROM EDGE REQUIRED)
8FT	400LBS	THROUGH BOLT -OR- CONCRETE ANCHOR	3.5IN	3/8" HEX BOLT 3/8" FLAT WASHER 3/8" LOCK WASHER 3/8" NUT	4IN
6FT	300LBS	LAG BOLT -OR- THROUGH BOLT -OR- CONCRETE ANCHOR	3IN		3IN
4FT	200LBS	LAG BOLT -OR- THROUGH BOLT -OR- CONCRETE ANCHOR	2.5IN		3IN



DRAWN:	CH	DATE:	01/09/2024	APPROVED:
DESCRIPTION:				
MOUNTING SCHEDULE				
SHEET 4 OF 4		REVISION	PART NUMBER	
SCALE 1:15		0	N/A	
WEIGHT: N/A				

THE INFORMATION CONTAINED IN THIS DRAWING IS PROTECTED BY COPYRIGHT AND PATENT LAWS OF THE UNITED STATES AND OTHER COUNTRIES. ANY REPRODUCTION IN PART OR AS A WHOLE WITHOUT WRITTEN PERMISSION IS PROHIBITED.